

QUARTZ CRYSTAL UNIT IN RESIN MOLD SMD PACKAGE, SIZE 12.5 X 4.6MM WITH 4 J-LEADS.

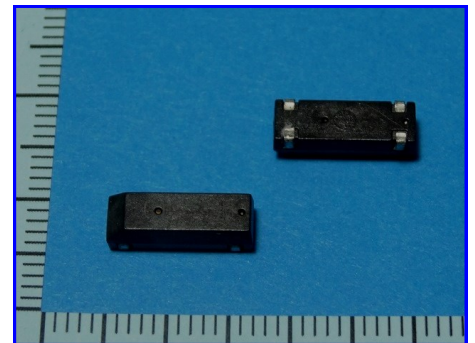
01-CR1-38

PRODUCT FEATURES

- SMD RESIN MOLD PACKAGE SIZE 12.5 X 4.6 X 3.6MM WITH 4 J-LEADS.
- WIDE FREQUENCY RANGE FOR MEDIUM ACCURACY APPLICATIONS.
- SUITABLE FOR SMT AND LEAD-FREE REFLOW PROCESSING.

APPLICATIONS

- MICROPROCESSOR
- GRAPHICS CARD
- AUDIO & VIDEO EQUIPMENT



PRODUCT SPECIFICATIONS

PARAMETER	SYMBOL	SPECIFICATIONS	REMARKS
FREQUENCY RANGE	F_N	3.570 ~ 70.0MHZ	FUNDAMENTAL UP TO 36MHZ
OPERATION MODE	—	FUNDAMENTAL / 3RD OVERTONE	OVERTONE ABOVE 27MHZ
FREQUENCY TOLERANCE	$\Delta f/f$	$\pm 20\text{PPM}$, $\pm 30\text{PPM}$, $\pm 50\text{PPM}$	OTHER OPTIONS AVAILABLE
STABILITY OVER OPERATING TEMP.	T_C	$\pm 30\text{PPM}$, $\pm 50\text{PPM}$, $\pm 100\text{PPM}$	DEPENDING ON OPERATING TEMPERATURE RANGE (NOTE 1)
OPERATING TEMPERATURE RANGE	T_{OP}	$-10^\circ\text{C} \sim +60^\circ\text{C}$ OR $-20^\circ\text{C} \sim +70^\circ\text{C}$	OTHER OPTIONS AVAILABLE
LOAD CAPACITANCE	CL	8 TO 32PF OR SERIES	PLEASE SPECIFY LOAD CAPACITANCE
SHUNT CAPACITANCE	C_0	5pF	—
EQUIVALENT SERIES RESISTANCE	ESR	200 Ω MAX	FUND MODE 3.57 ~ 4MHZ
		150 Ω MAX	FUND MODE 4 ~ 6MHZ
		100 Ω MAX	FUND MODE 6 ~ 10MHZ
		60 Ω MAX	FUND MODE 10 ~ 16MHZ
		50 Ω MAX	FUND MODE 16 ~ 36MHZ
		100 Ω MAX	3RD OT MODE 27 ~ 36MHZ
		80 Ω MAX	3RD OT MODE 36 ~ 70MHZ
DRIVE LEVEL	DL	100 μW TYP, 500 μW MAX	—
AGING FIRST YEAR	$\Delta f/y_1$	$\pm 5\text{PPM}$	@+25 $^\circ\text{C}$
INSULATION RESISTANCE	IR	>500M Ω	@100 $\pm 15\text{V}_{DC}$
STORAGE TEMPERATURE RANGE	T_{ST}	$-50^\circ\text{C} \sim +125^\circ\text{C}$	—

NOTE 1: STABILITY IS THE FREQUENCY DEVIATION OVER OPERATING TEMPERATURE RANGE IN REFERENCE TO THE READING AT +25 $^\circ\text{C}$.

MECHANICAL DIMENSIONS

PIN	FUNCTION
1	CRYSTAL
2	N.C.
3	N.C.
4	CRYSTAL

Resin mold crystal package
12.5x4.6mm with 4 pins

PX124-4PD PX124-4PD
B 2017-11

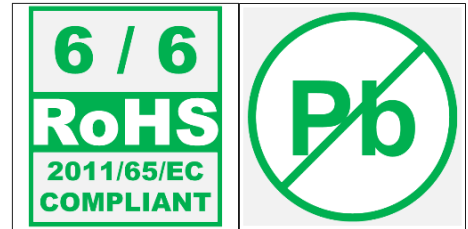
- No scale Unit: mm

QUARTZ CRYSTAL UNIT IN RESIN MOLD SMD PACKAGE, SIZE 12.5 x 4.6MM WITH 4 J-LEADS.

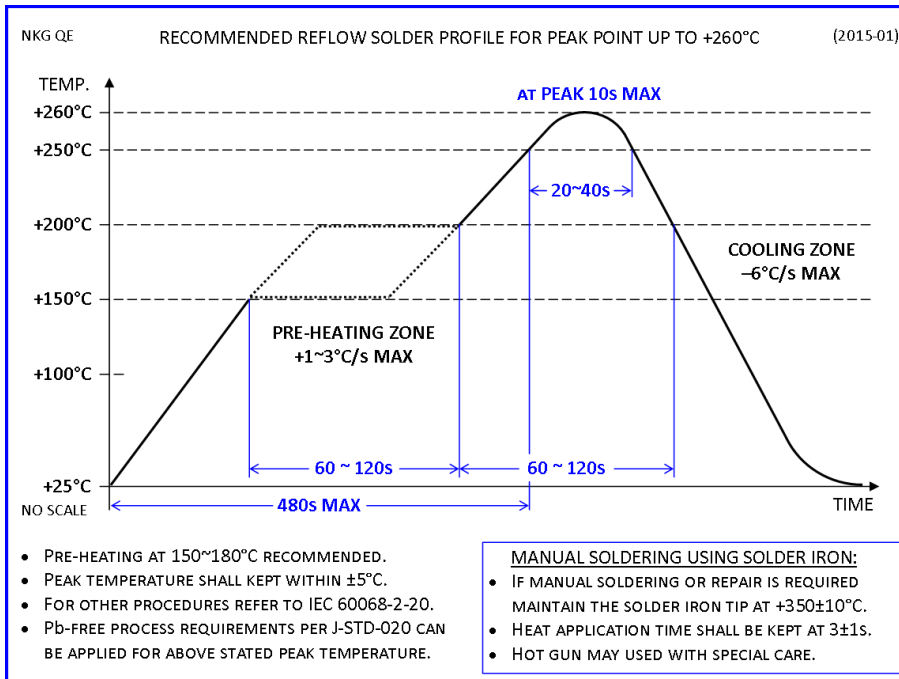
01-CR1-38

ENVIRONMENTAL COMPLIANCE INFORMATION

- ROHS 6/6 COMPLIANT (DIRECTIVE 2011/65/EC) AND LEAD-FREE.
- COMPLIANT TO ROHS 2 (DIRECTIVE 2015/863) (ALSO CALLED ROHS 10).
- HALOGEN-FREE PER DEFINITION OF IEC 61249-2-21 2033.
- NONE-USE OF SVHCS PER REACH IS CURRENTLY GIVEN, CONTINUOUSLY MONITORED AND UPDATED AS THE COMMISSION ISSUES NEW RELEASES.
- PRODUCT DOES NOT CONTAIN ANY PHTHALATES (PHS).
- PRODUCT DOES NOT CONTAIN PVC (POLYVINYL CHLORIDE).
- PRODUCT DOES NOT CONTAIN PFOS/PFOA NOR BEING SAME USED TO MANUFACTURE THE COMPONENTS OF THIS PRODUCT.
- MOISTURE SENSITIVITY LEVEL (MSL) 1 PER J-STD-020C.

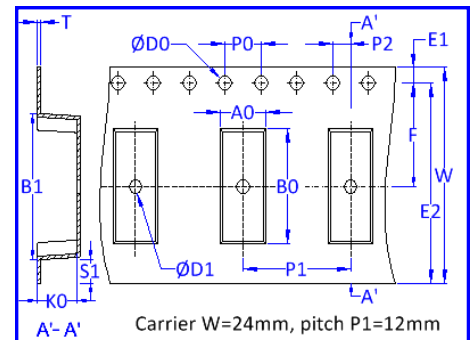


SOLDERING RECOMMENDATIONS



PACKAGING INFORMATION

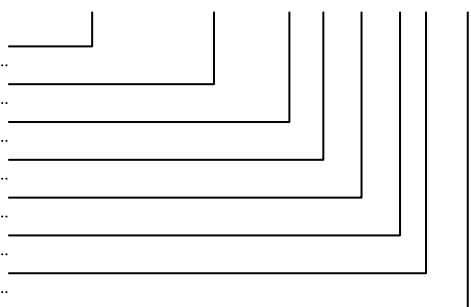
- PACKAGING IN TAPE & REEL IN COMPLIANCE TO EIA-481.
- QTY PER REEL: 1,000PCS
- REEL DIA A=330MM.
- EMBOSSED CARRIER TAPE WIDTH W = 24MM.
- COMPONENT PITCH P1 = 12MM.



PART NUMBER SYNTAX

- PART NUMBER FAMILY (REPRESENTS PRODUCT MODEL AND PACKAGE SIZE / TYPE)
- NOMINAL FREQUENCY (IN MHZ WITH AT LEAST THREE DIGITS AFTER DECIMAL POINT)
- OPERATION MODE CODE (BLANK = FUNDAMENTAL / T = 3RD OVERTONE)
- LOAD CAPACITANCE (ACTUAL VALUE OR 00 FOR SERIES)
- FREQUENCY TOLERANCE DESIGNATOR (I.E. 20=20PPM, 3=30PPM, 50=50PPM)
- FREQUENCY STABILITY DESIGNATOR (I.E. 30=30PPM, 50=50PPM, 00=100PPM)
- OPERATING TEMPERATURE RANGE CODE (I.E. C= -10~60°C, E= -20~70°C, M= -40~85°C)
- PART NUMBER EXTENSION (ONLY FOR NONE-STANDARD OR CUSTOMIZED PART)

01-CR3-38-25M000-T30-3050E-EXT



FOR MORE INFORMATION PLEASE CONTACT US.

HONG KONG:

NAKAGAWA ELECTRONICS LIMITED

+852 2389 9201 sales@nkg.com.hk
+852 2341 0001 www.nkg.com.hk

China Shenzhen office:

深圳中川晶体电子有限公司

+86(0)755 2598 2648 sales_sz@nkg.cn
+86(0)755 2598 2390 www.nkg.com.hk

China Suzhou office:

苏州纳美电子有限公司

+86(0)512 8818 7890 sales_nm@nkg.cn
+86(0)512 8818 7889 www.nkg.com.hk